

# SEM Proxy Servers

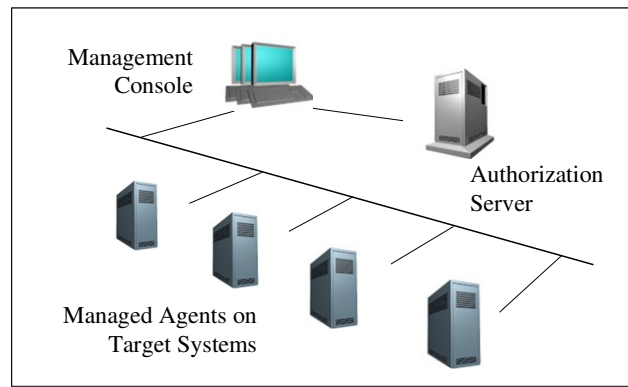
*“Need stricter controls over access to your DMZ by System Management procedures?”*

In addition to the existing security features offered by Sysgem’s unique *“Software Component Authentication”* architecture and the ability to encrypt internal network traffic using *Blowfish-256* encryption, Sysgem now adds “SEM Proxy Servers” to their SEM architectural design.

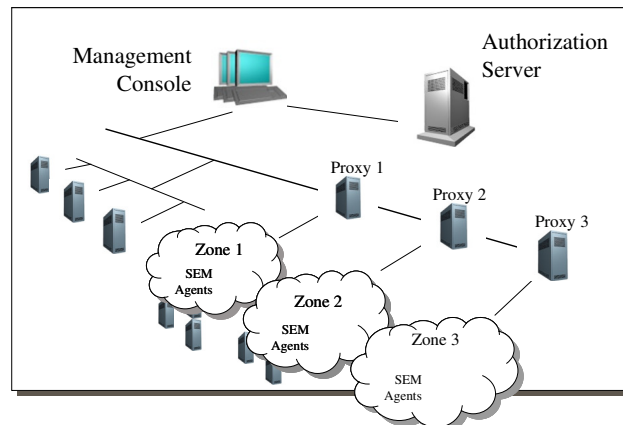
“SEM Proxy Servers” enable communication routes between SEM workstations and SEM managed agents to be channelled through a set of control filters. A SEM Proxy Server will restrict which SEM users are permitted to connect, and which scripts / menu options are permitted to be used in certain security zones of a customer’s network. Furthermore, SEM Proxy Servers introduce “SSH Tunnelling” and “Connection Auditing” to SEM’s already impressive list of security and auditing safeguards.

## How it works:

Sysgem’s *“Software Component Authentication”* architecture already prevents unauthorized access to agent software in a three-layer software structure:



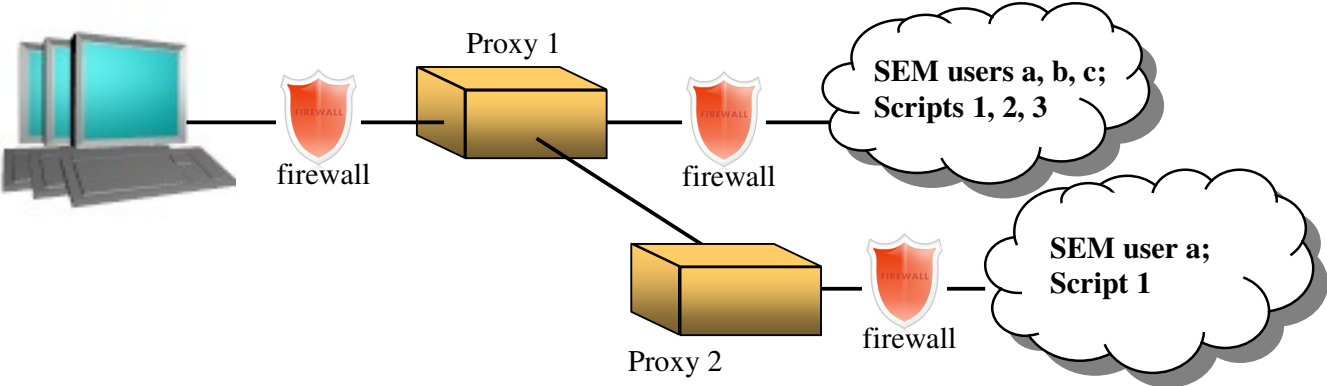
... but introduce SEM Proxy Servers into a customer network and zones can be defined in which only authorized users and nominated scripts / menu options may operate:



SEM users, who have logged in using a nominated SEM Authorization Server, are “registered” with the Proxy Servers and only they may connect to the SEM Agents in each of the zones supported by those Proxy Servers.

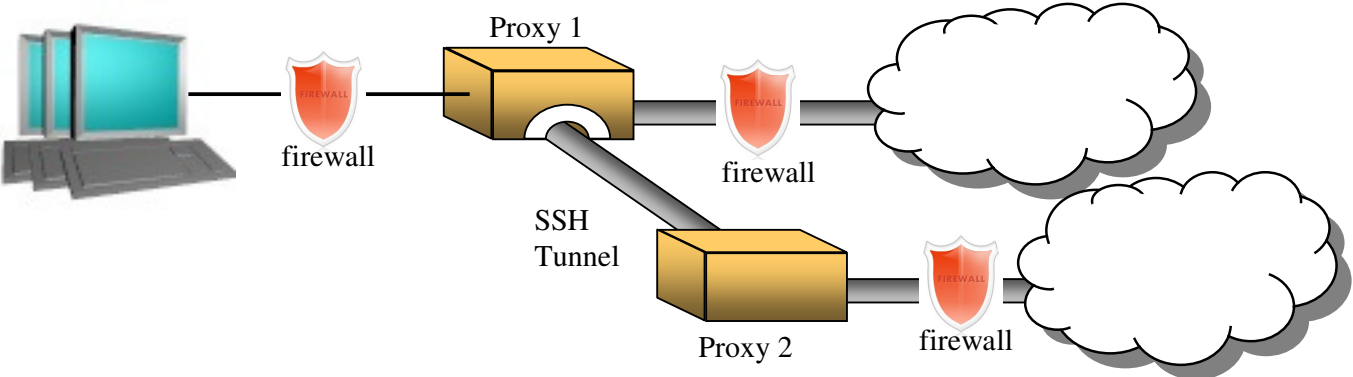
### Cascaded Security Access:

Proxy Servers may connect to other Proxy Servers to permit a hierarchical cascading of security restrictions right down to the inner core of a customer's DMZ.



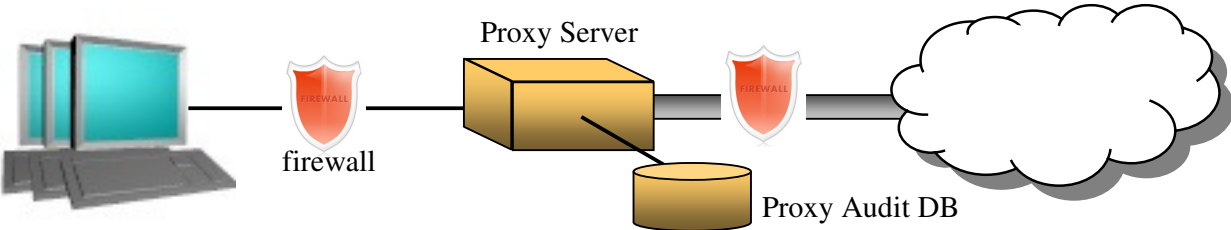
### SSH Tunnelling

For still greater security, SSH Tunnels may be set up between Proxy Servers or between Proxy Servers and end target-servers where SEM agents are installed.



### Connection Auditing

Proxy Servers may be configured to audit transactions to various depth of detail, e.g. who has connected, which Authorization Server / workstation they used, failed connections, message types, field types, agent lists, etc.



For further information please contact: [marketing@sysgem.com](mailto:marketing@sysgem.com)