



Installing Sysgem Enterprise Manager

for

an Evaluation of Sysgem File Synchronizer (SFiS)

CONTENTS

Installing SEM on MS Windows & Linux	3
Step 1. Installation password:	3
Step 2. Product name and build number	4
Step 3. License agreement	4
Step 4. Installers name and company name	5
Step 5. Destination location	5
Step 6. The name of the Sysgem program folder under “Start” – “Programs”	6
Step 7. Select which SEM components to install	6
Step 8. The account under which the SEM agent will run.....	7
Step 9. IP port number used by the SEM Authorization Server	7
Step 10. IP port number used by the SEM Agent	8
Step 11. Choose the type of security key scheme	8
Step 12. Enter the Security Key	9
Step 13. Start the Installation	9
Step 14. Copy system files and set up SEM	10
Step 15. Complete the installation procedure	10
Step 16. Log into the “FileSync” account.....	11
Step 17. Register an evaluation license (valid for 30 days).....	11
Step 18. Install the SEM Agent on one or more Linux servers	12
Step 19. Create a Source File by importing an example.....	15
Step 20. Explore the other options available	17
Step 21. Request a WebEx demonstration from Sysgem	17

Use This Guide in conjunction with:

1. “SEM Quick Start Guide”, and
2. “SEM Installation Guide”.

Installing SEM on MS Windows & Linux

Download the installation kit from the following Sysgem Download page:

<http://www.sysgem.com/downloads.php>

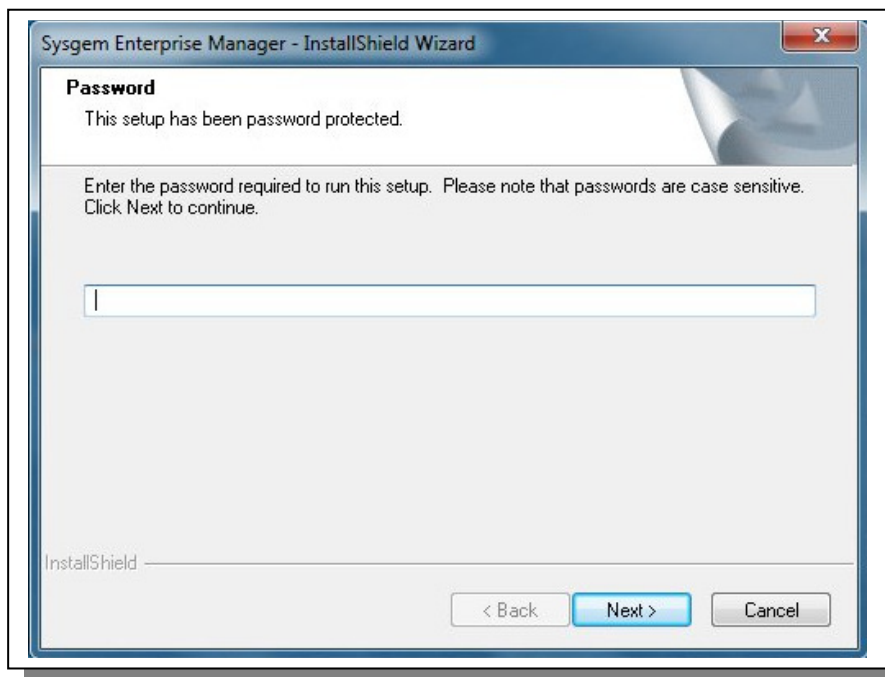
The required file is located by following the link under “SEM for Windows”.

Run the installation executable program. The filename includes the build number of the kit and resembles the following:

SYSGEMiWindowsNT_BuildXXXX.exe (where “XXXX” is the build number)

The following screenshots show the steps required for installing the kit. For an evaluation installation the default values can be used for most of prompts. Normally, the only prompt requiring a specific reply is shown in step ??.

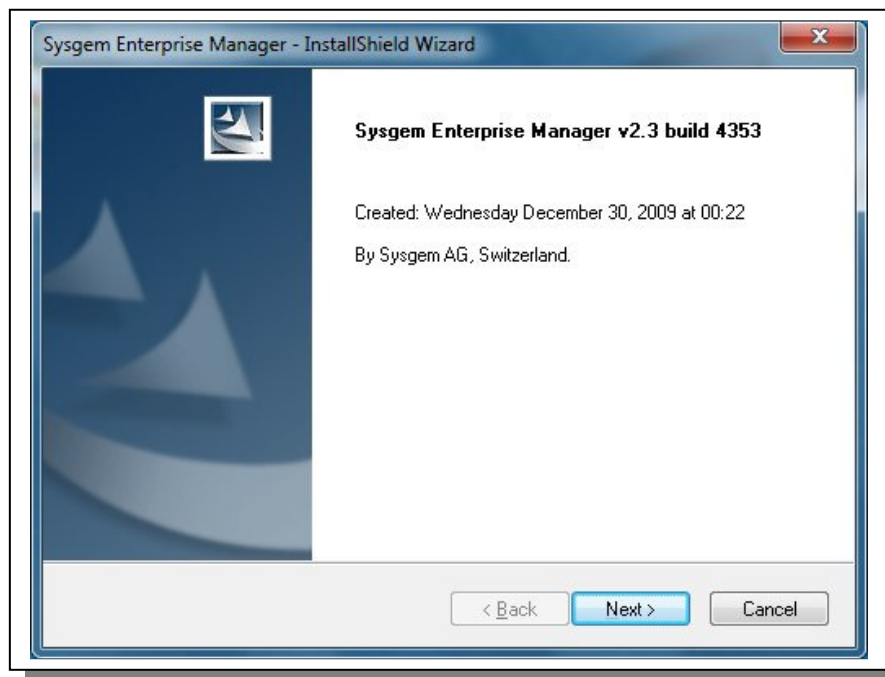
Step 1. Installation password:



Enter “Control Tower”. This is two words, it is case sensitive and without the quotes.

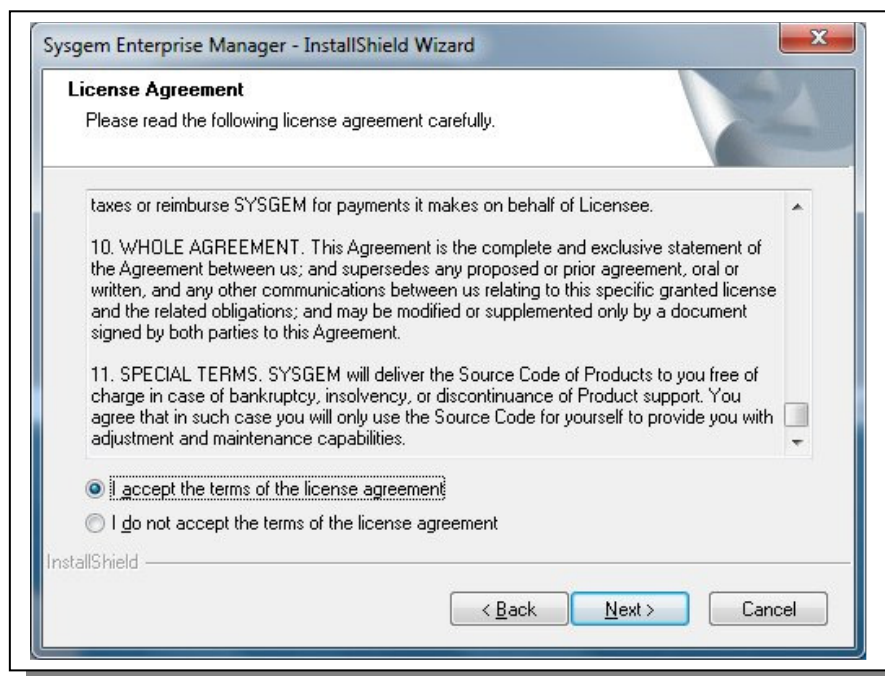
Press Next >.

Step 2. Product name and build number



Press Next >.

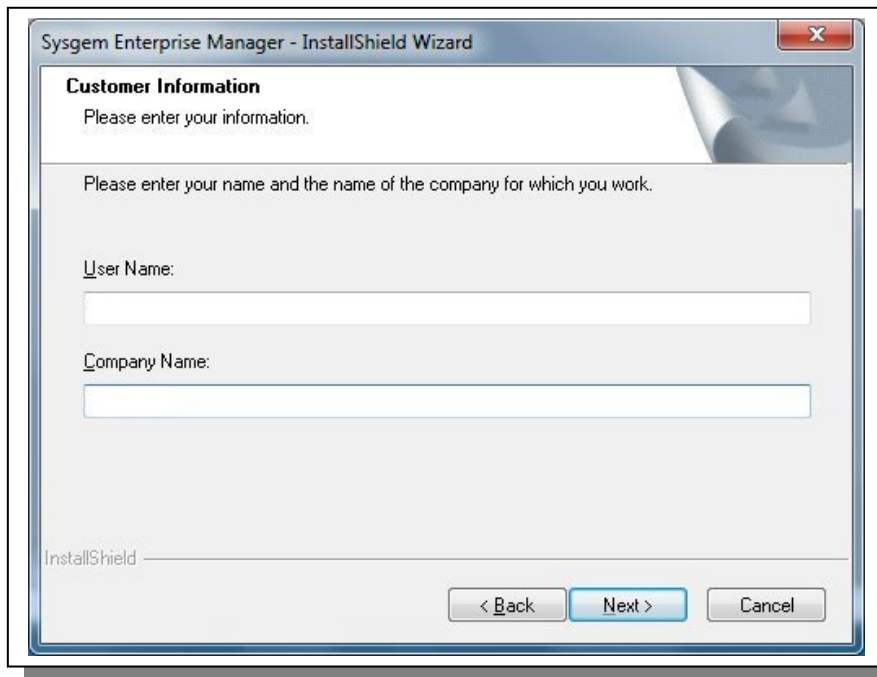
Step 3. License agreement



Read the license agreement; click “I accept the terms of the license agreement”

Press Next >.

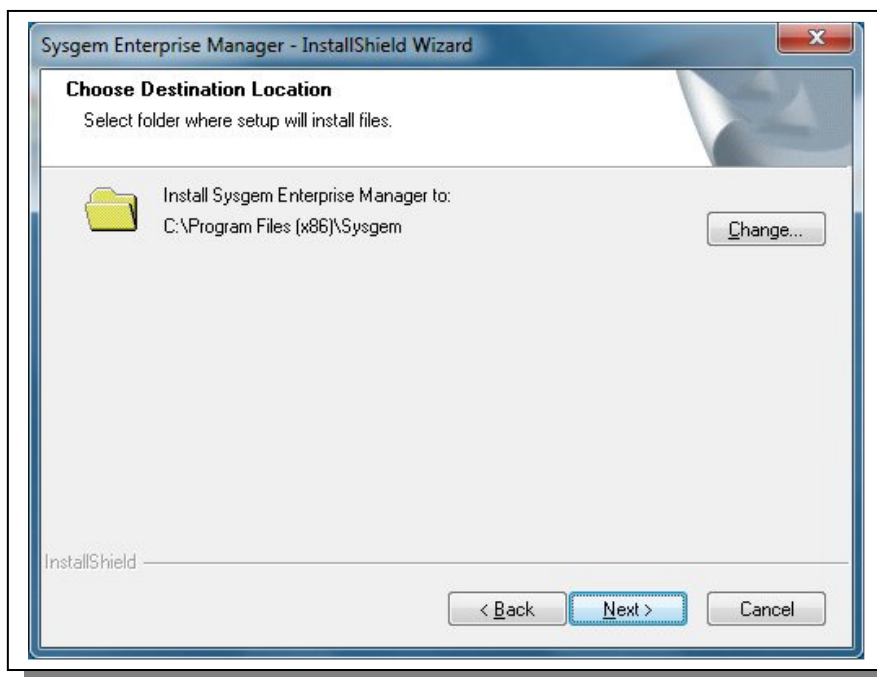
Step 4. Installers name and company name



Enter your name and your company name.

Press Next >.

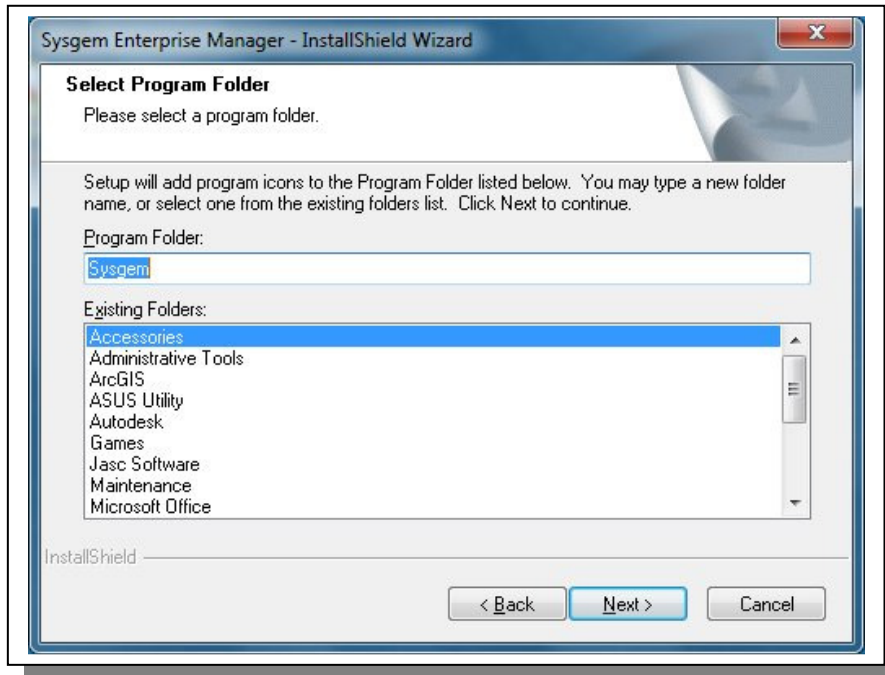
Step 5. Destination location



Select the location of Sysgem root folder under which all SEM files will be placed.

Press Next >.

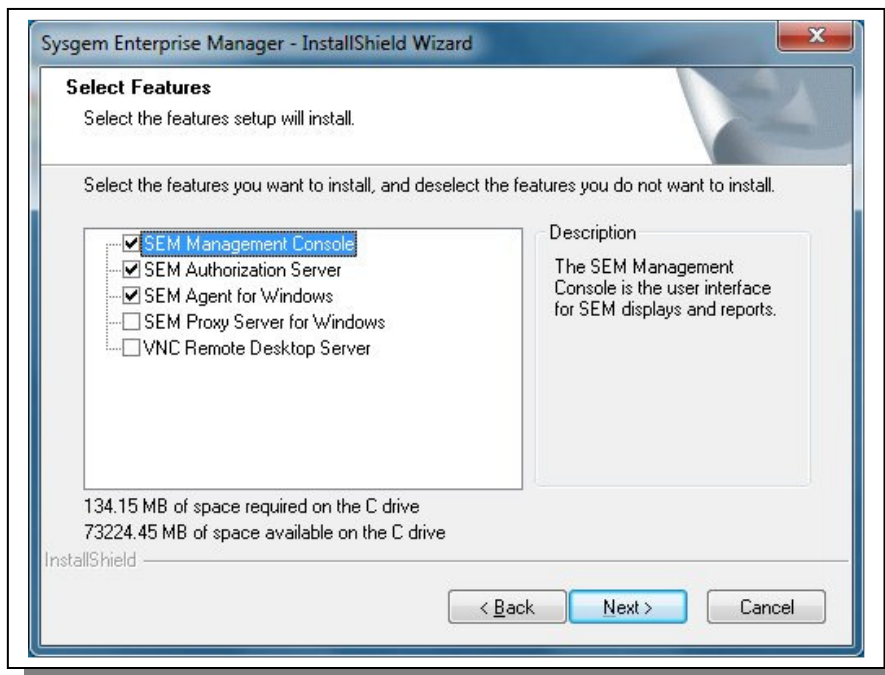
Step 6. The name of the Sysgem program folder under “Start” – “Programs”



Accept the default name of “Sysgem”.

Press Next >.

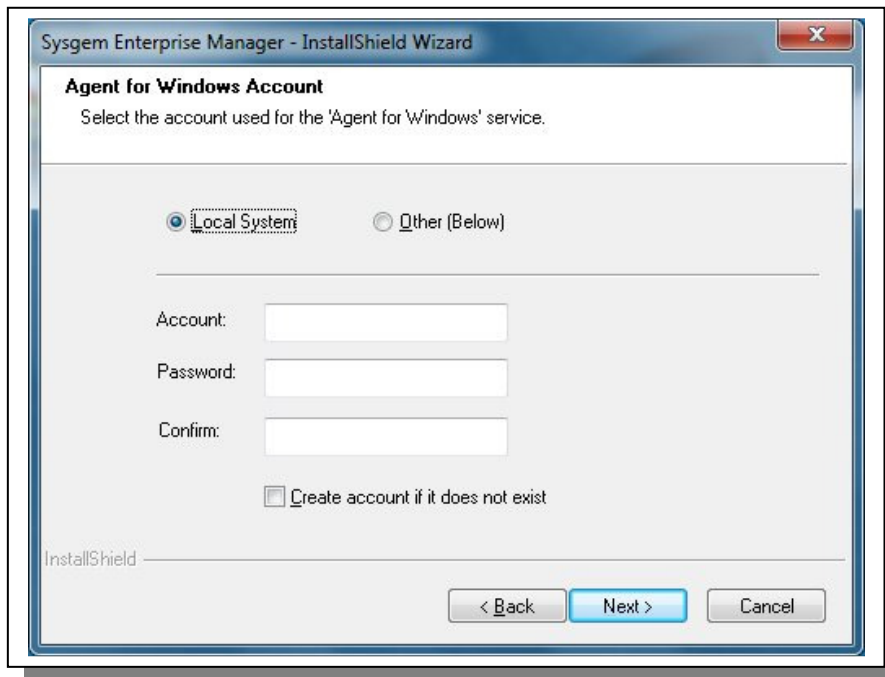
Step 7. Select which SEM components to install



For an evaluation installation; use the first three options (as selected by default).

Press Next >.

Step 8. The account under which the SEM agent will run



Sysgem Enterprise Manager - InstallShield Wizard

Agent for Windows Account
Select the account used for the 'Agent for Windows' service.

Local System Other (Below)

Account:

Password:

Confirm:

Create account if it does not exist

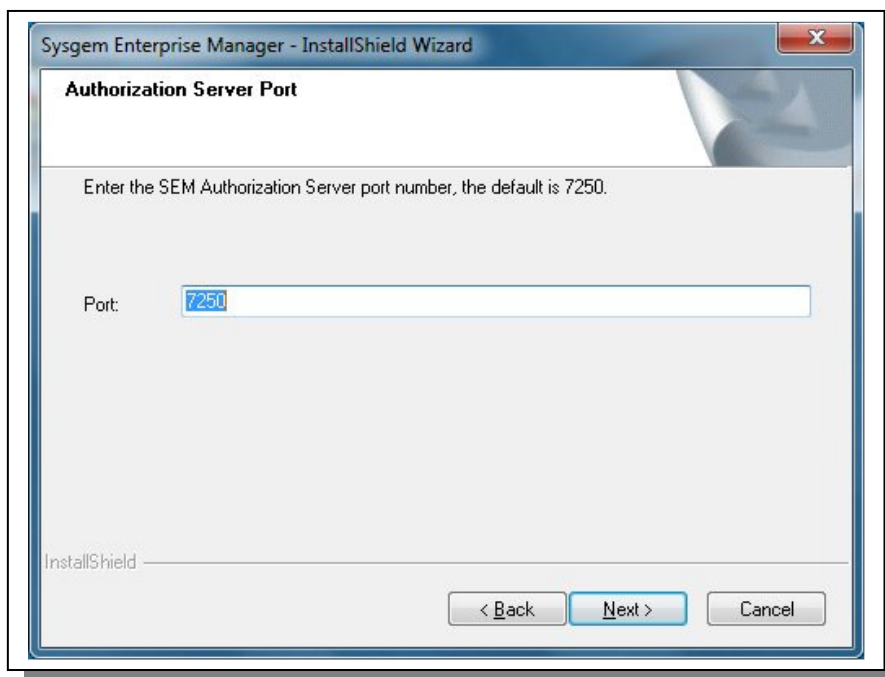
InstallShield

< Back Next > Cancel

For evaluation purposes; use the default of “Local System”.

Press Next >.

Step 9. IP port number used by the SEM Authorization Server



Sysgem Enterprise Manager - InstallShield Wizard

Authorization Server Port

Enter the SEM Authorization Server port number, the default is 7250.

Port:

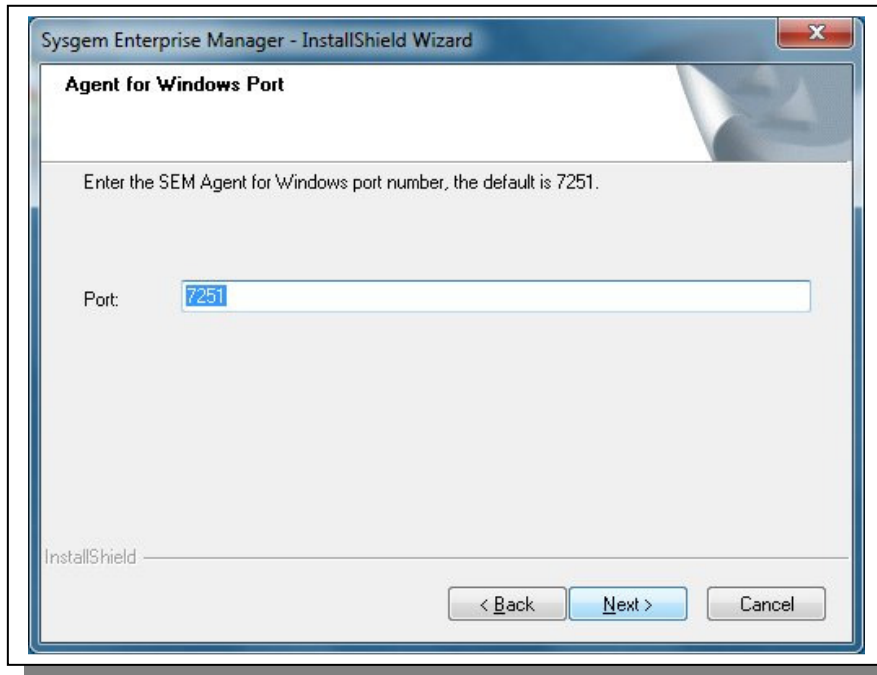
InstallShield

< Back Next > Cancel

For evaluation purposes; use the default of “7250”.

Press Next >.

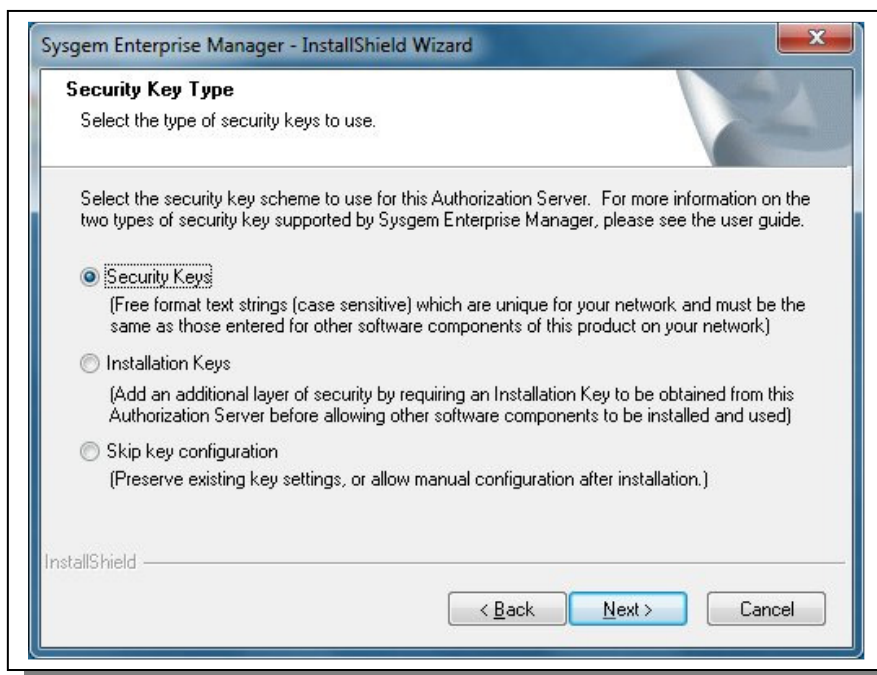
Step 10. IP port number used by the SEM Agent



For evaluation purposes; use the default of “7251”.

Press Next >.

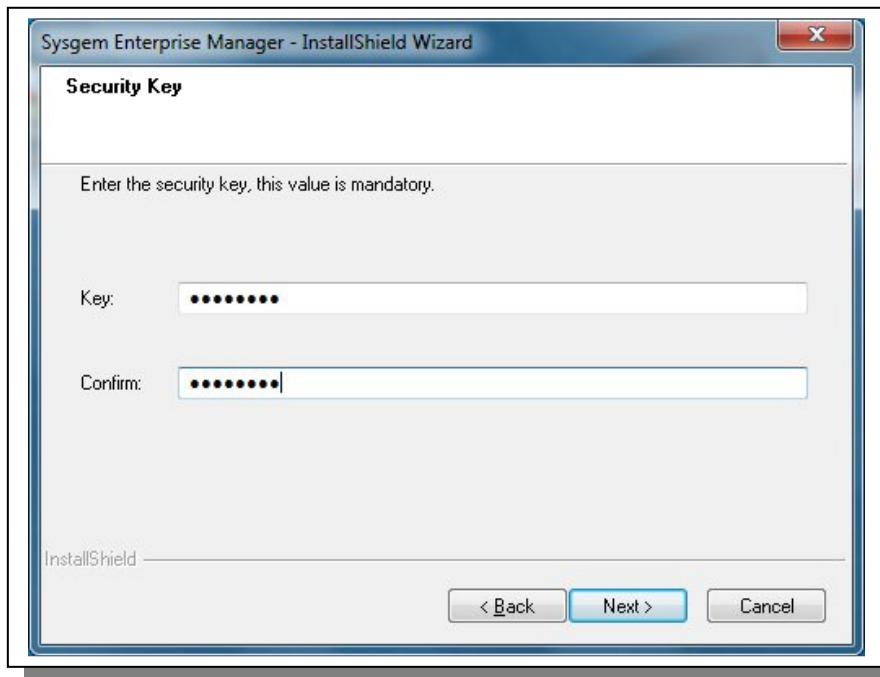
Step 11 Choose the type of security key scheme



For evaluation purposes; use the default of “Security Keys”.

Press Next >.

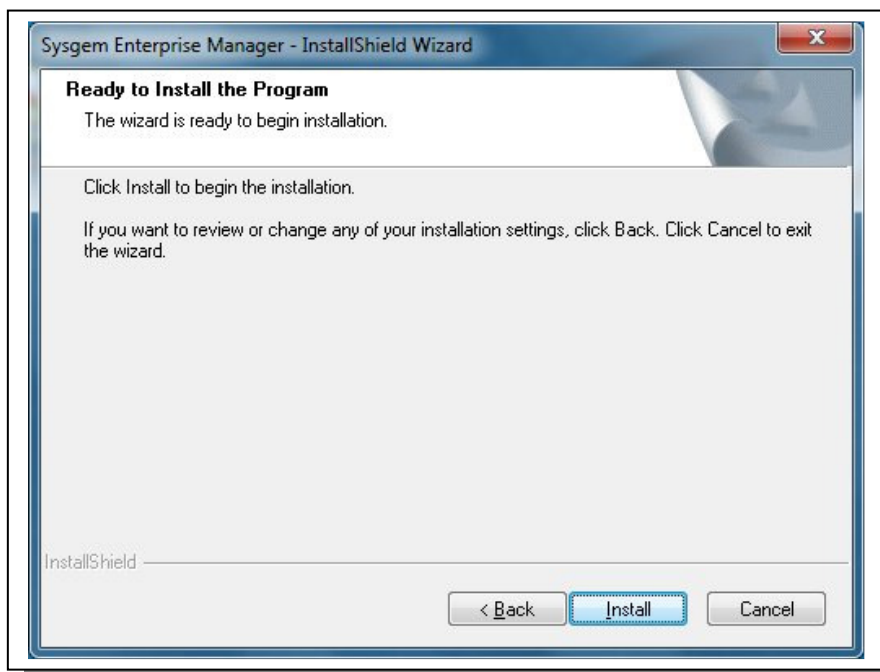
Step 12. Enter the Security Key



IMPORTANT - This is a case sensitive text phrase invented by the customer at installation time. All components (including SEM Agents on other platforms) must have the same key defined for the components to be able to interoperate.

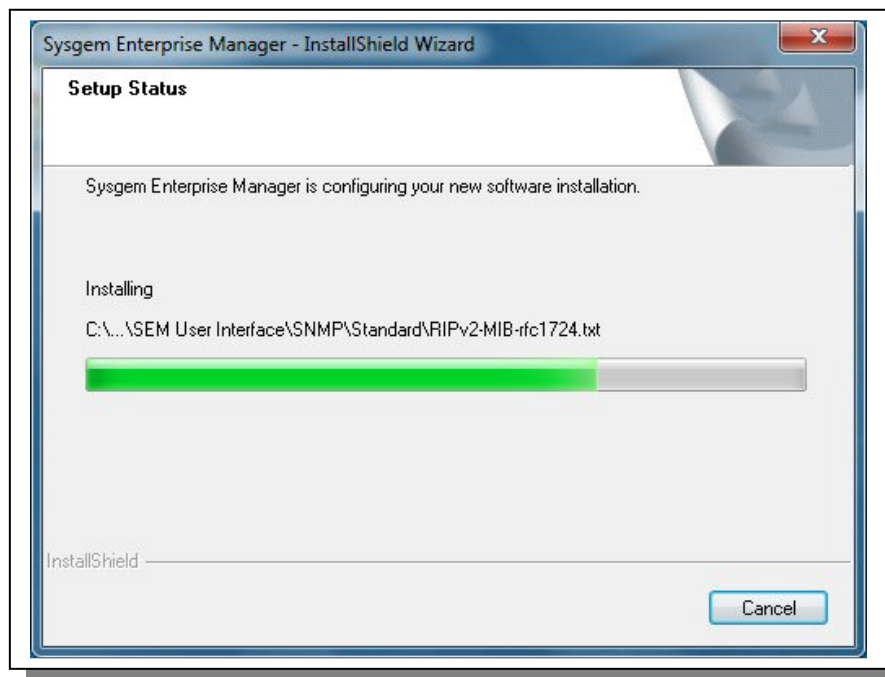
Press Next >.

Step 13. Start the Installation



Press Install >.

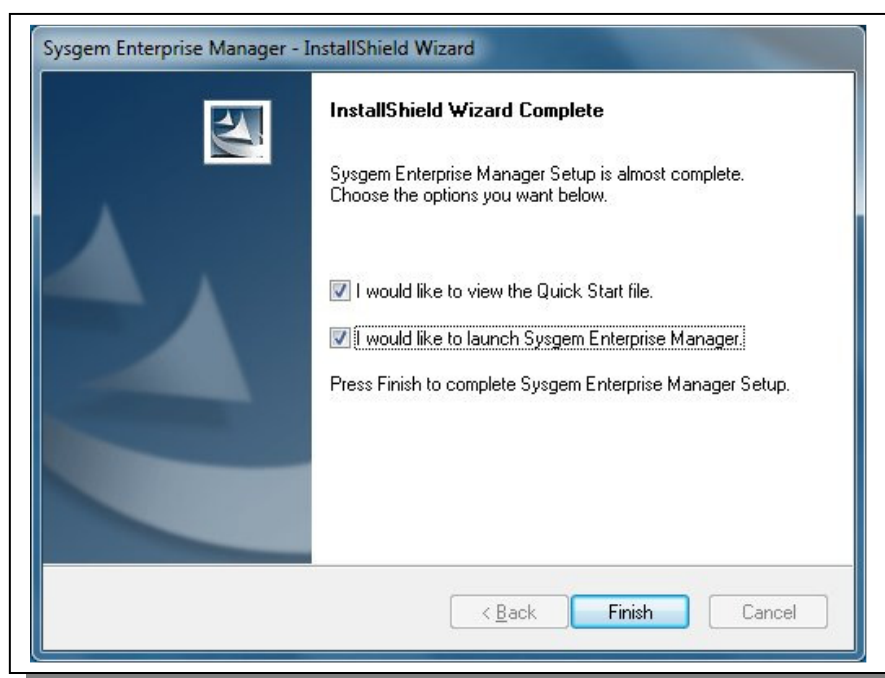
Step 14. Copy system files and set up SEM



The procedure will appear to pause for one or two minutes, then start to install the files.

Press Next >.

Step 15. Complete the installation procedure



If you haven't already received a copy of the Quick Start Guide select the first option. Select the second option to automatically start the application, then press "Finish".

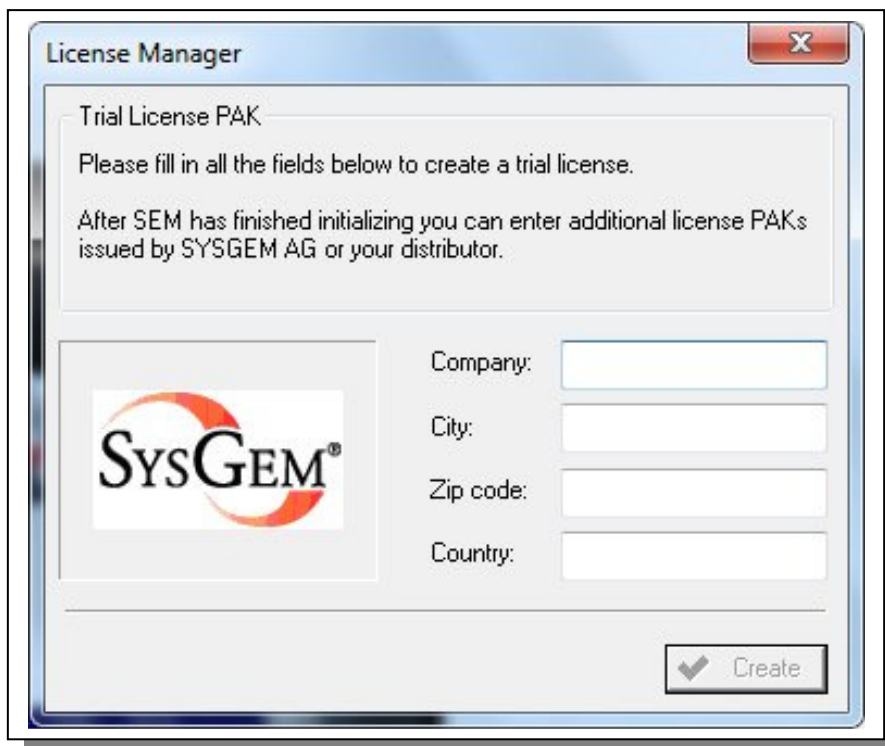
Step 16. Log into the “FileSync” account



Enter the username of: “FileSync” and enter a password of: “sysgem” (the password is all lower case and without the quotes).

Press “Logon”.

Step 17. Register an evaluation license (valid for 30 days)



During the logon procedure a prompt window will be shown similar to the above. Enter the details of your company and click “Create”. The 30 day trial period can be extended on request.

Step 18 Install the SEM Agent on one or more Linux servers

Copy the SEM Agent for Linux from the Sysgem download page:

<http://www.sysgem.com/downloads.php>

The required file is located by following the link under “SEM Agent for UNIX/Linux”.

Read the Installation Guide that can be copied from the above download page under the heading of :

“Product Guide” -> “SEM Installation Guide”

... or by following the link:

http://www.sysgem.com/uploaded_files/productguides/InstallationGuide.zip

IMPORTANT _ Take care that the “Security Key” that you enter when installing the SEM Agent is exactly the same as the one entered during the Windows installation.

Below is an extract from the Installation Guide as an example for installing on a UNIX/Linux system:

```
# ./setup
SEM Agent for UNIX
-----

[8] Platform is SunOS
[7] Data file is _kit.6
[6] Creating /kits/SEM_kit/tmp
[5] Copying _kit.6 to /kits/SEM_kit/tmp
[4] Changing to /kits/SEM_kit/tmp
[3] Unpacking _kit.6
[2] Removing temporary files
[1] Launching SEMInstaller

Sysgem SEM Agent UNIX Installer

Agent .....: Sysgem SEM Agent v2.1 build 2918
Target .....: SunOS
Hostname ...: rose
Processor ..: sun4m

Step 1/6 - Checking Inventory

Unpacking _data.0...

Step 2/6 - Directory

Enter the directory where the agent is to be installed.
The recommended default is /opt/Sysgem/SEM

Enter the directory [/opt/Sysgem/SEM]

Step 3/6 - Port Number

Enter the TCP/IP port number. The default is 7251.

Enter the port number [7251]
```

Step 4/6 - Security Key

This product uses a powerful security model to guard against attack.

As part of the installation you MUST enter a security key.

```
*****
*
* SECURITY - Installation Key - SECURITY. *
*
*****
```

This product uses a powerful security model to guard against attack.

If this is the first time that you have installed this agent on this host then you MUST enter a key.

Starting with version 2.1 of Sysgem Enterprise Manager, keys can take two forms:

- [1] standard security keys - free format text strings (case sensitive) which are unique for your network and MUST be the same as that entered for other software components of this product on your network, and
- [2] an installation key - used by the agent to retrieve domain keys from the Authorization Server.

For more information please read the user guide.

Key Configuration:

- [1] Standard security key
- [2] Installation key

- [9] Skip key configuration

Please select a key type from the above list [1]

Enter the security key [] **FortKnox**

Confirmation [] **FortKnox**

Step 5/6 - Autostart

If you want the agent to start when you boot this system then enter YES, otherwise NO.

If you select NO then you must start the agent interactively each time you boot this system.

Start the agent when the system boots? [**Yes**]

Step 6/6 - Start Agent

If you want to use the agent now then it must be started after the, installation is complete.

If you do not start the agent now then you must start it by either rebooting the system (if you have selected this option) or by starting it interactively.

Start the agent after the installation? [**Yes**]

Confirmation

Directory: **/opt/Sysgem/SEM**

Port number: **7251**

Security key: **#####**

Autostart: **Yes**

Start agent: **Yes**

Is this correct? [**Yes**]

Start the installation now? [**Yes**]

```

Stopping Agent
  If the agent is running it will be stopped.
  Agent not found.

Creating Directory: /opt/Sysgem/SEM/library
/opt... Exists
/opt/Sysgem... Exists
/opt/Sysgem/SEM... Exists
/opt/Sysgem/SEM/library... Exists

Copying Files

Creating Directory: /usr/lib
/usr... Exists
/usr/lib... Exists

SysgemSEMAgent...
SysgemSEMAgent.cfg... Exists (not overwritten)
SysgemSEMStart...
SEMInstaller...
ssm-accounts...
ssm-blowfish...
ssm-commander...
ssm-perf...
ssm-syslog...
AddStartup...
RemoveStartup...
init.tcl...
libstdc++.so.2.10.0... Exists (not overwritten)

Installing Security Key
Installing SCSA Security Key
-----
Index ....: 0
Value ....: #####
File .....: /opt/Sysgem/SEM/Sun_security_key_0.arc
Status ....: OK

SCSA Security Keys
-----
Key 0 ....: Valid

Updating Autostart Tables
Removing: /etc/rc3.d/S99Sysgem...
Removing: /etc/init.d/SysgemSEMStart...
Copying: /etc/init.d/SysgemSEMStart...
Linking: /etc/rc3.d/S99Sysgem...

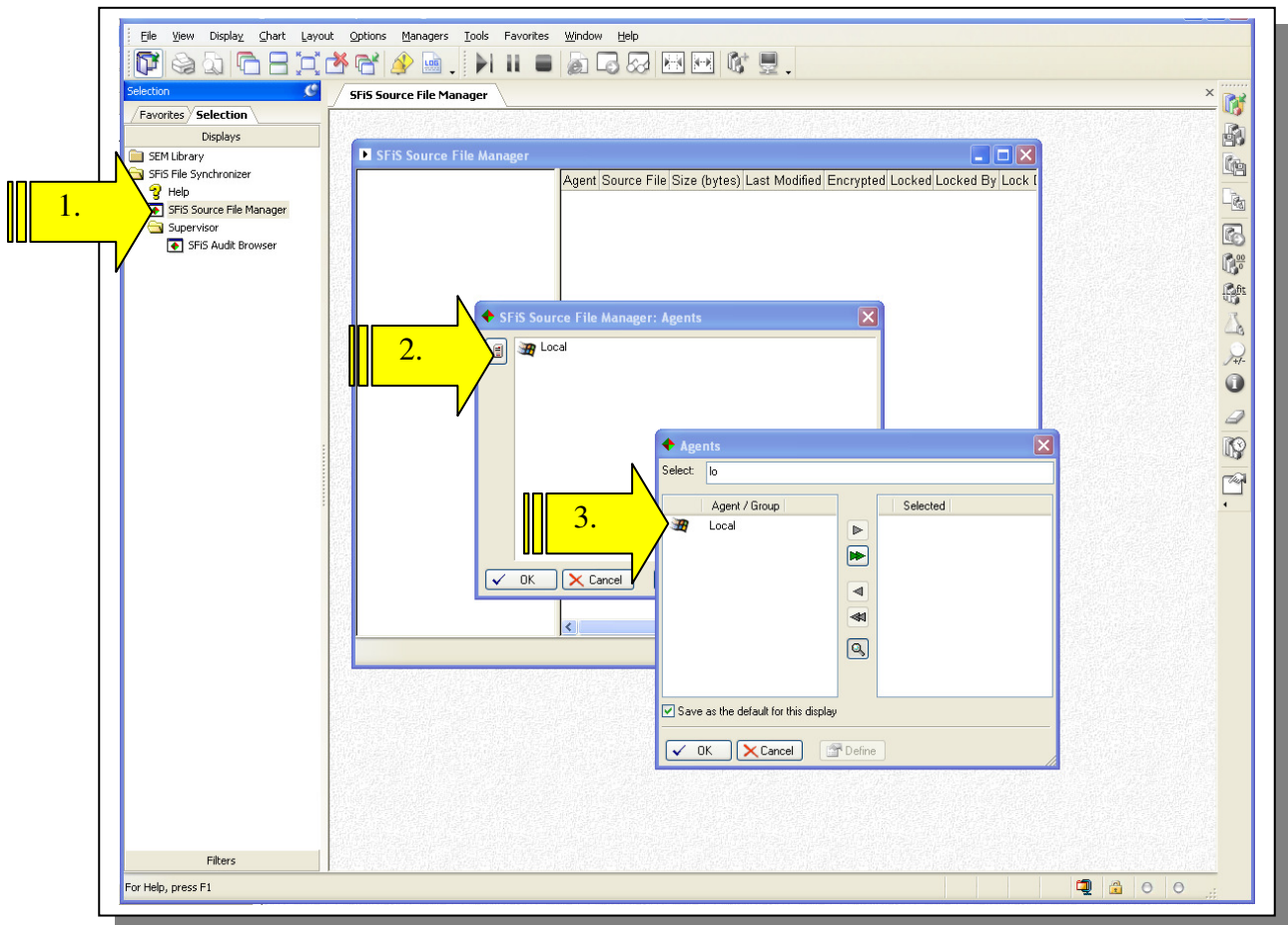
Starting The Agent
  PID      USER      TIME  COMMAND
  434      root      0:00  /opt/Sysgem/SEM/SysgemSEMAgent

Installation completed.
#

```

Step 19. Create a Source File by importing an example

Having logged into SEM using the “FileSync user account, start the “SFIS Source File Manager” window by double clicking on the item shown by arrow “1” below.



In the startup up window select the “Agents” icon (top left button in the startup window – shown by arrow “2”) and double click on the “Local” agent (arrow “3”).

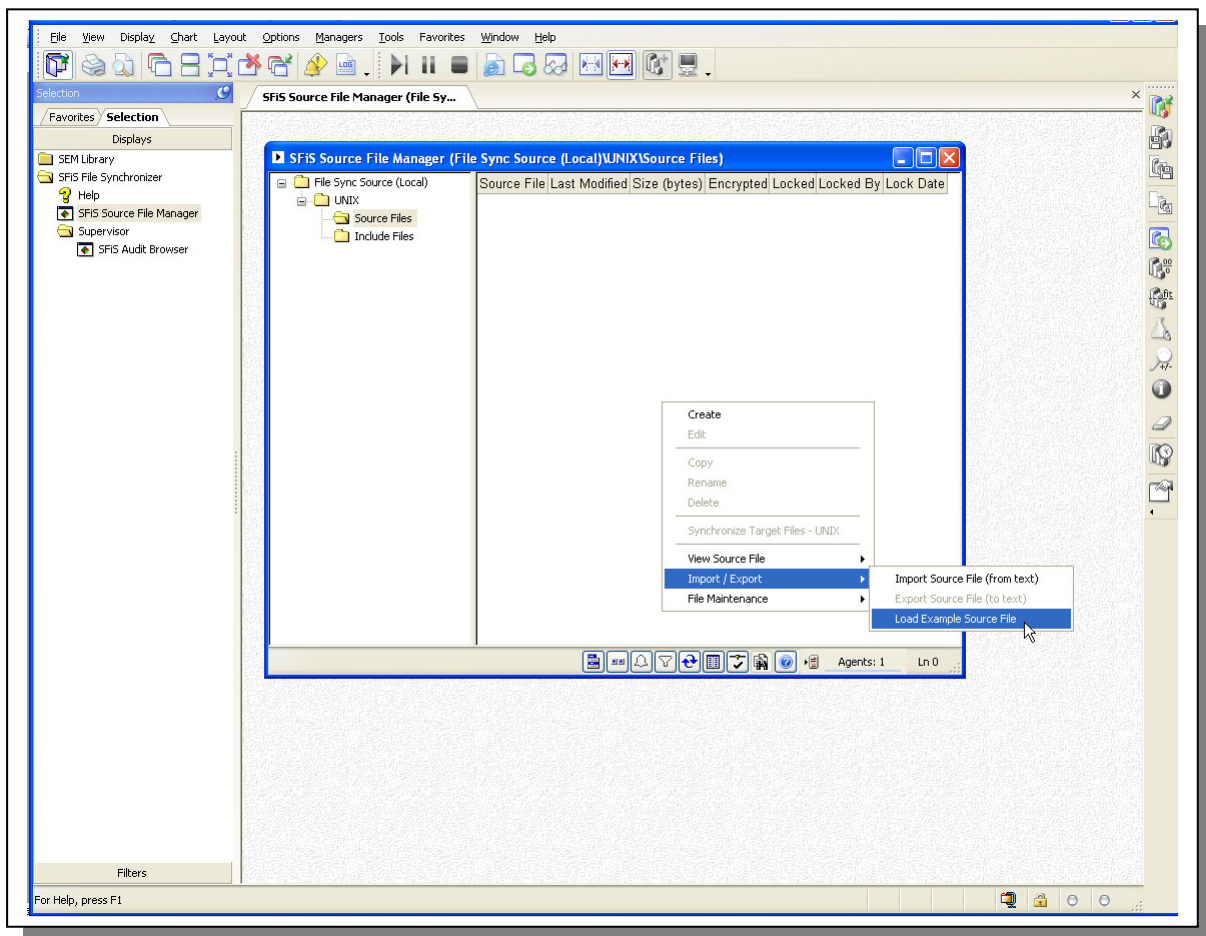
The SFIS Source File Manager Window will then show two empty folders as in the next screenshot.

Make sure that the “Source Files” folder is selected and then use the right mouse key to bring up a menu option on the SFIS Source File Manager Window. Select the option:

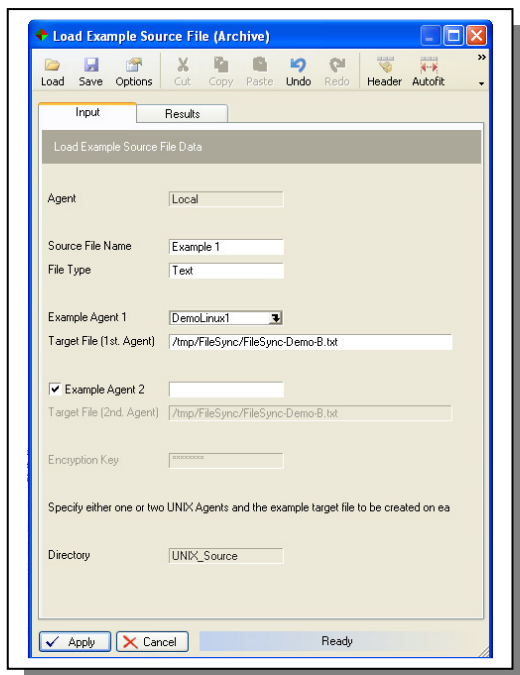
“Import / Export”

“Load Example Source File”

“Load an Example Source File...”



Select at least one Linux Agent as in the example below:



... and press “Apply” to create the file.

Step 20. Explore the other options available

Explore the other options available on the Source File Manager window by pressing the right mouse key in the window and making a selection from the drop down list of options.

Step 21. Request a WebEx demonstration from Sysgem

Contact Sysgem (support@sysgem.com) for a demonstration of the features available using the installed application on your system and a WebEx conference to the Sysgem demonstration Centre.